

Special Response Protocols

School Bus Accident

Protocol 6-01

Start / JumpStart Algorithm

Protocol 6-02

TRINITY EMS SYSTEM PREHOSPITAL GUIDELINES



Approved by EMS Medical Director 2012

SCHOOL BUS ACCIDENT SPECIAL RESPONSE PROTOCOL # 6 - 01

HISTORY

- ✓ Mechanism of injury
- ✓ Number of patients
- ✓ Damage to the vehicle
- ✓ Ages of children
- ✓ Special needs population

SIGNS AND SYMPTOMS

- ✓ Altered mental status
- ✓ Pain, swelling
- ✓ Deformity, lesions, bleeding
- ✓ Hypotension or shock
- ✓ Shortness of breath

DIFFERENTIAL

- ✓ Refer to specific protocols for individual complaints
- ✓ Enlist help of parents with pediatrics, especially special needs population

CATEGORY A

- Significant mechanism of injury (e.g., rollover, high-speed impact, intrusion into bus, etc.)
- School bus occupancy indicates that at least one child may reasonably be expected to have significant injuries or significant injury is present in one or more children

- All children in this category **must** be transferred to an appropriate hospital **unless** an EMS System refusal form is signed by a parent or legal guardian.

CATEGORY B

- Suspicious mechanism of injury (e.g., speed of impact, some intrusion into bus, etc.)
- School bus occupancy indicates that at least one child may reasonably be expected to have minor injuries or minor injury in one or more children exists with no obvious mechanism of injury that could reasonably be expected to cause significant injuries.

- EMS personnel must complete the *EMS Multiple Casualty Release Form* and secure a signature of an appropriate school official.

CALL MEDICAL CONTROL FOR EARLY NOTIFICATION OF MULTIPLE PEDIATRIC TRAUMA

CATEGORY C

- No obvious mechanism of injury
- School bus occupancy indicates no injuries may be present and that the release of uninjured children may be the only EMS need.
- No injuries are found to be present in any of the children.

- EMS personnel must complete the *EMS Multiple Casualty Release Form* and secure a signature of an appropriate school official.

CATEGORY D

- Pediatric patient(s) have special healthcare needs and/or communication difficulties.

- All of these patients **must** be transported to the hospital for evaluation **unless** approval for release is received from Medical Control or a parent/legal guardian has signed the approved refusal form.

PEARLS

- ✓ Utilize START/Jump START triage protocol
- ✓ EMS Multiple Casualty Release Forms found in Appendix - FORMS
- ✓ You may enlist law enforcement to remove anyone obstructing EMS from caring for patients. Work in concert with agency having jurisdiction

SPECIAL RESPONSE PROTOCOL # 6 - 01

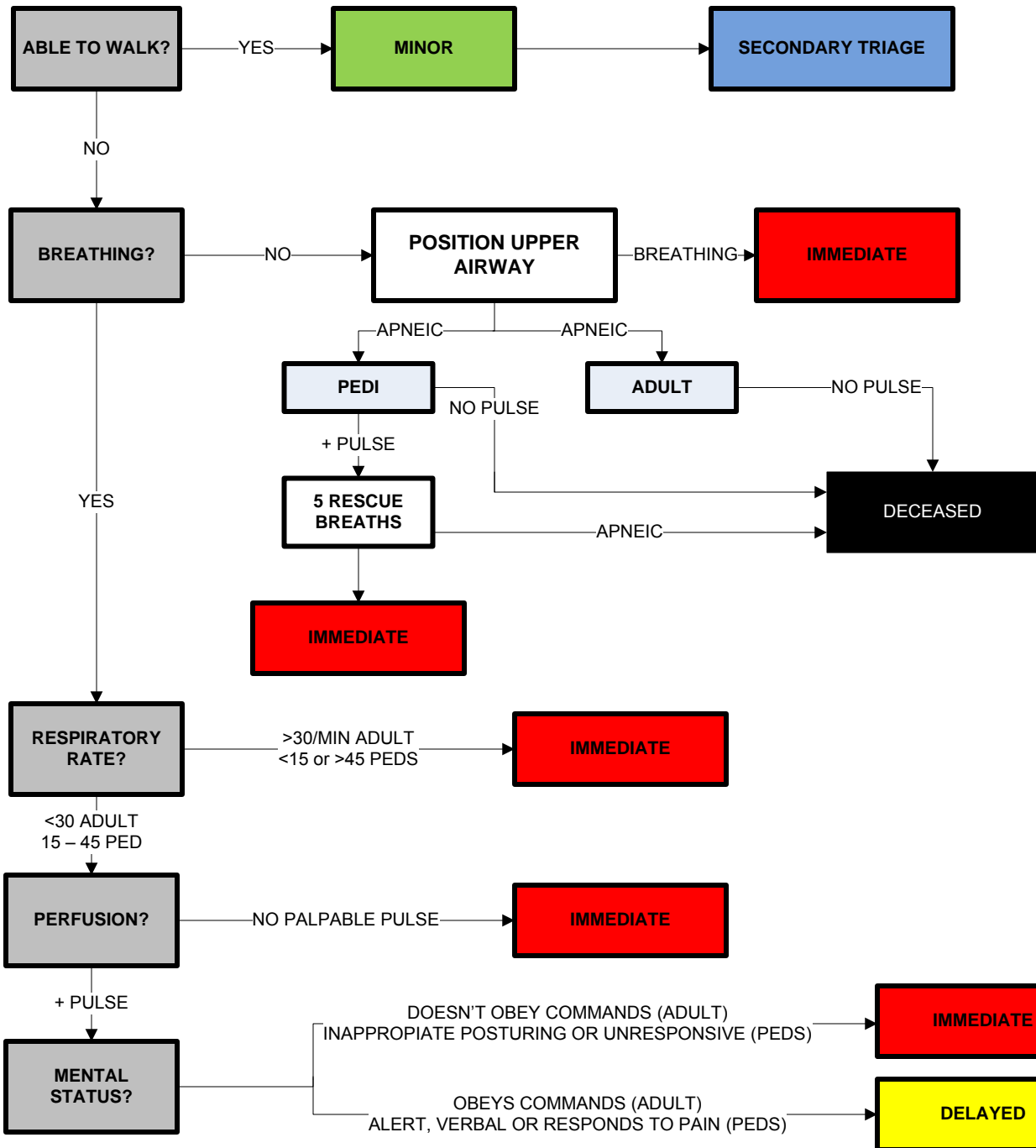
TRINITY EMS SYSTEM PREHOSPITAL GUIDELINES



Approved by EMS Medical Director 2012

START/JUMP START TRIAGE
SPECIAL RESPONSE PROTOCOL # 6 - 02

SPECIAL RESPONSE PROTOCOL # 6 - 02



PEARLS

- ✓ Using the Jump Start Algorithm, first evaluate all children who did not walk under their own power
- ✓ ALL EMS providers are encouraged to use the Triage Algorithm any time there are more than 2 – 3 patients requiring evaluation, treatment, or transport