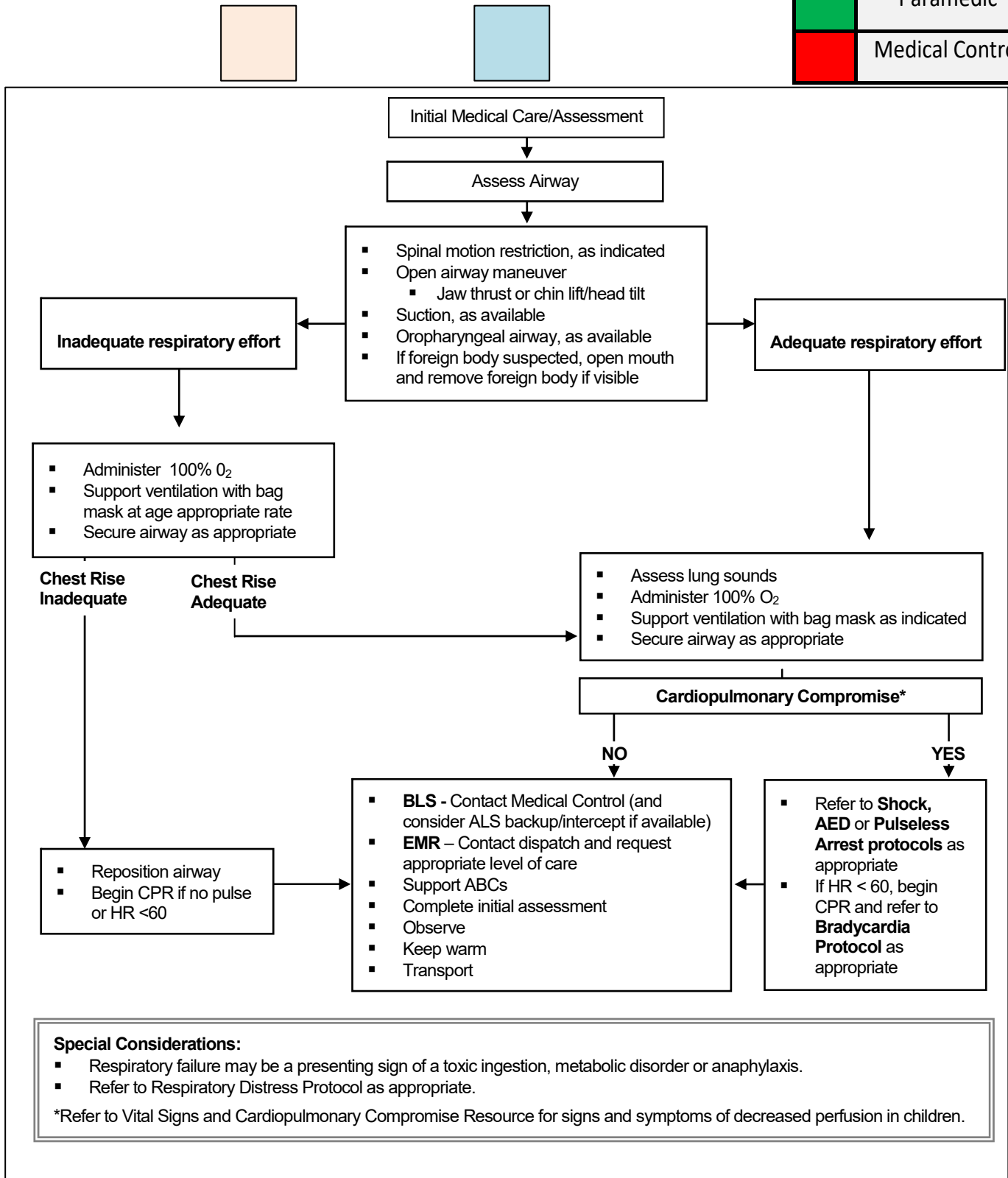


**Respiratory Failure
EMR & BLS**

Legend	
	EMR
	EMT
	Intermediate
	Paramedic
	Medical Control



Special Considerations:

- Respiratory failure may be a presenting sign of a toxic ingestion, metabolic disorder or anaphylaxis.
- Refer to Respiratory Distress Protocol as appropriate.

*Refer to Vital Signs and Cardiopulmonary Compromise Resource for signs and symptoms of decreased perfusion in children.