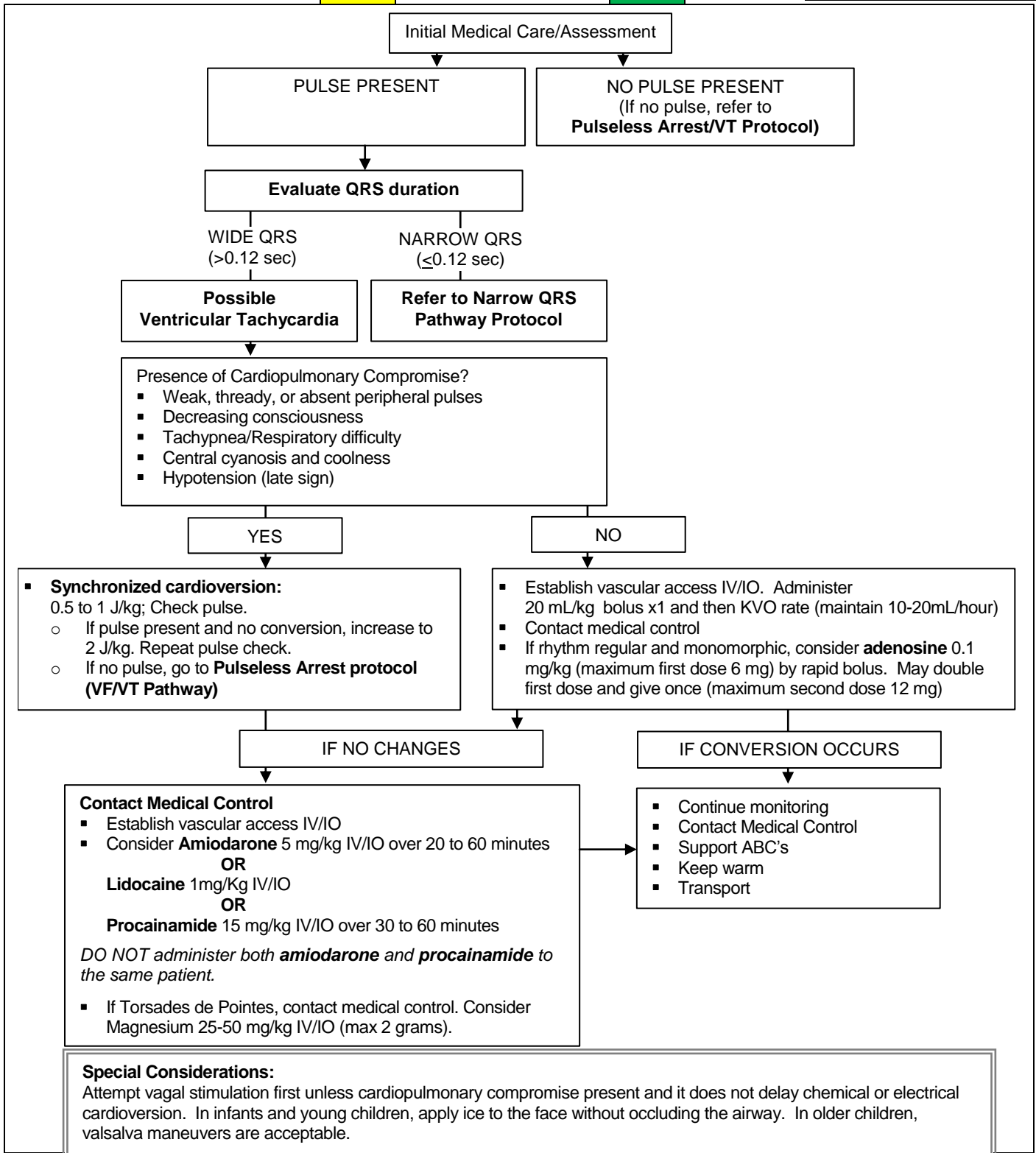
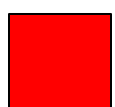
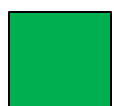
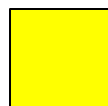




**Wide Complex Tachycardia
ILS & ALS**

Legend	
	EMR
	EMT
	Intermediate
	Paramedic
	Medical Control



Special Considerations:
Attempt vagal stimulation first unless cardiopulmonary compromise present and it does not delay chemical or electrical cardioversion. In infants and young children, apply ice to the face without occluding the airway. In older children, valsalva maneuvers are acceptable.