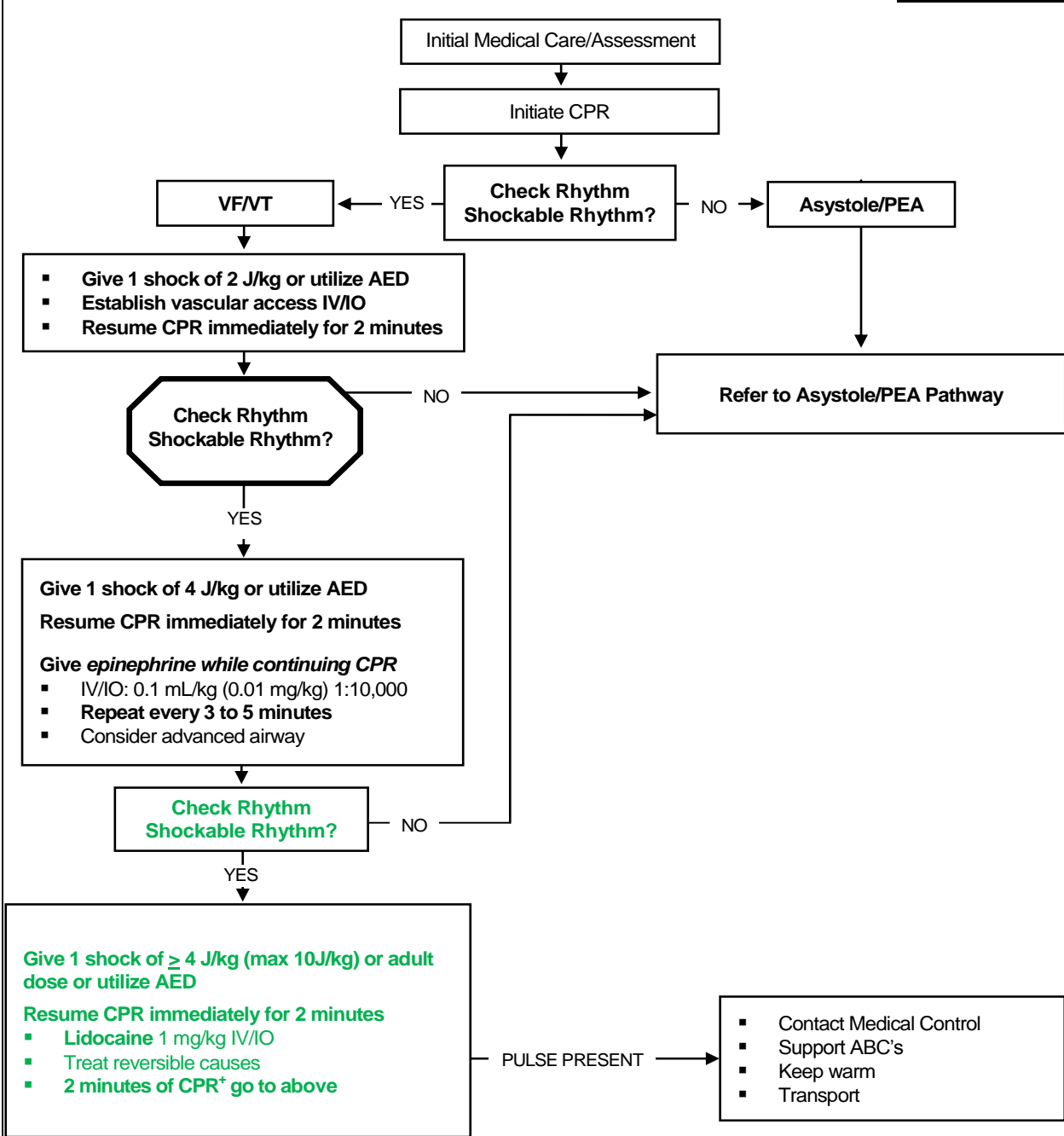
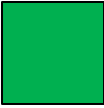
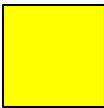


Pulseless V-FIB/V-TACH

Legend	
	EMR
	EMT
	Intermediate
	Paramedic
	Medical Control



Special Considerations:

- *If advanced airway is placed, give continuous chest compressions without pauses for breaths per current AHA/ARC guidelines. Check rhythm every 2 minutes.
 - If IV/IO access not available, consider ET administration (Epinephrine 0.1mL/kg (0.1mg/kg) 1:1000)
 - Consider therapeutic hypothermia if system protocol exists
 - Consider **magnesium** 25 to 50 mg/kg IV/IO, max 2 g for torsades de pointes

