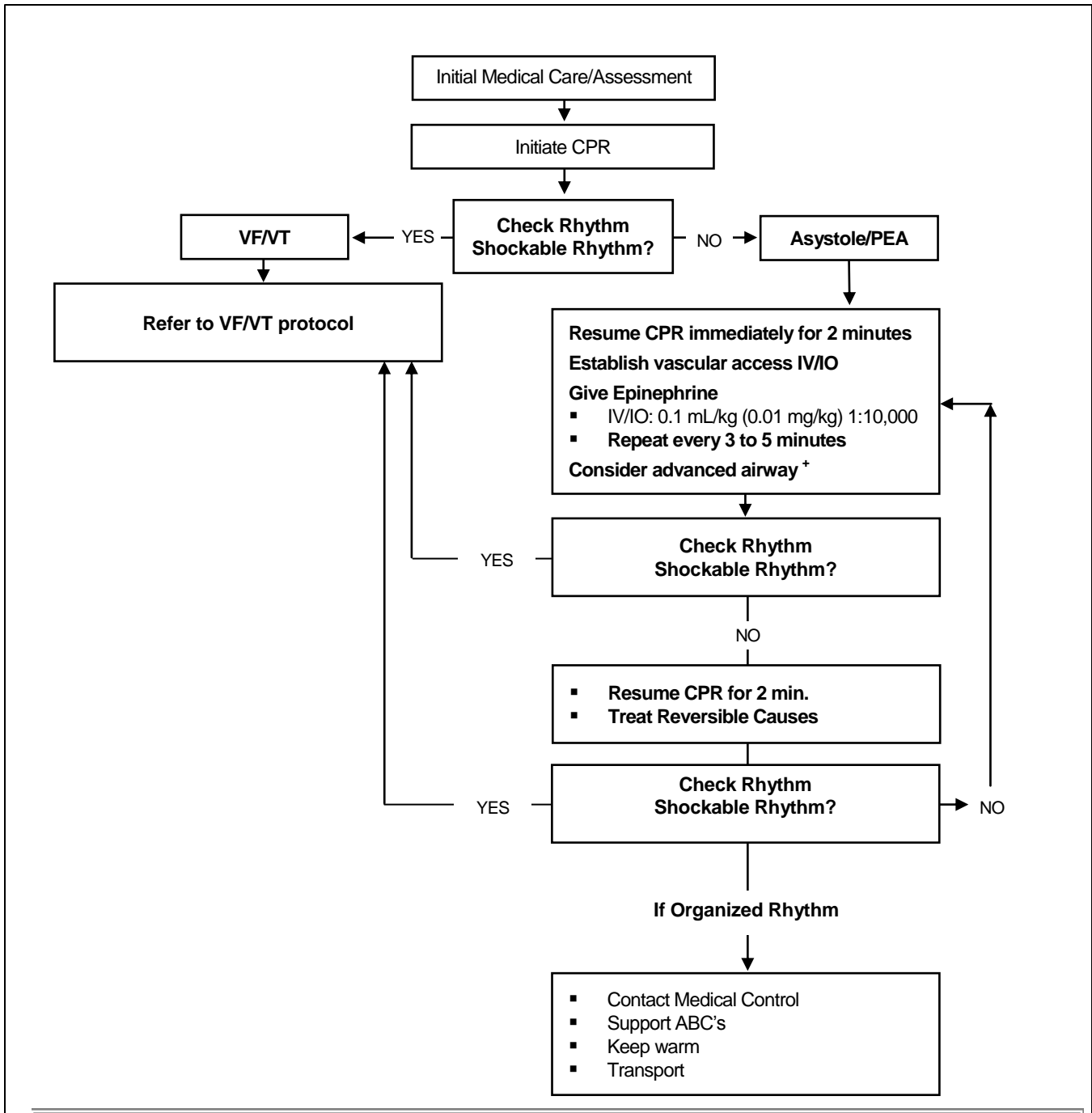
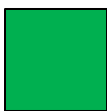
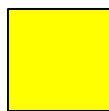


**Pulseless Arrest
ILS & ALS PEA/
Asystole**

Legend	
	EMR
	EMT
	Intermediate
	Paramedic
	Medical Control



Special Considerations:
 + If advanced airway is placed, give continuous chest compressions without pauses for breaths per current AHA/ARC guidelines. Check rhythm every 2 minutes.

- Contact medical control or refer to system protocol for termination of resuscitation
- If IV/IO access not available consider ET drug administration (Epinephrine 0.1 mL/kg (0.1mg/kg) 1:1000)
- Refer to length/weight based tool to identify specific dosages (if available)