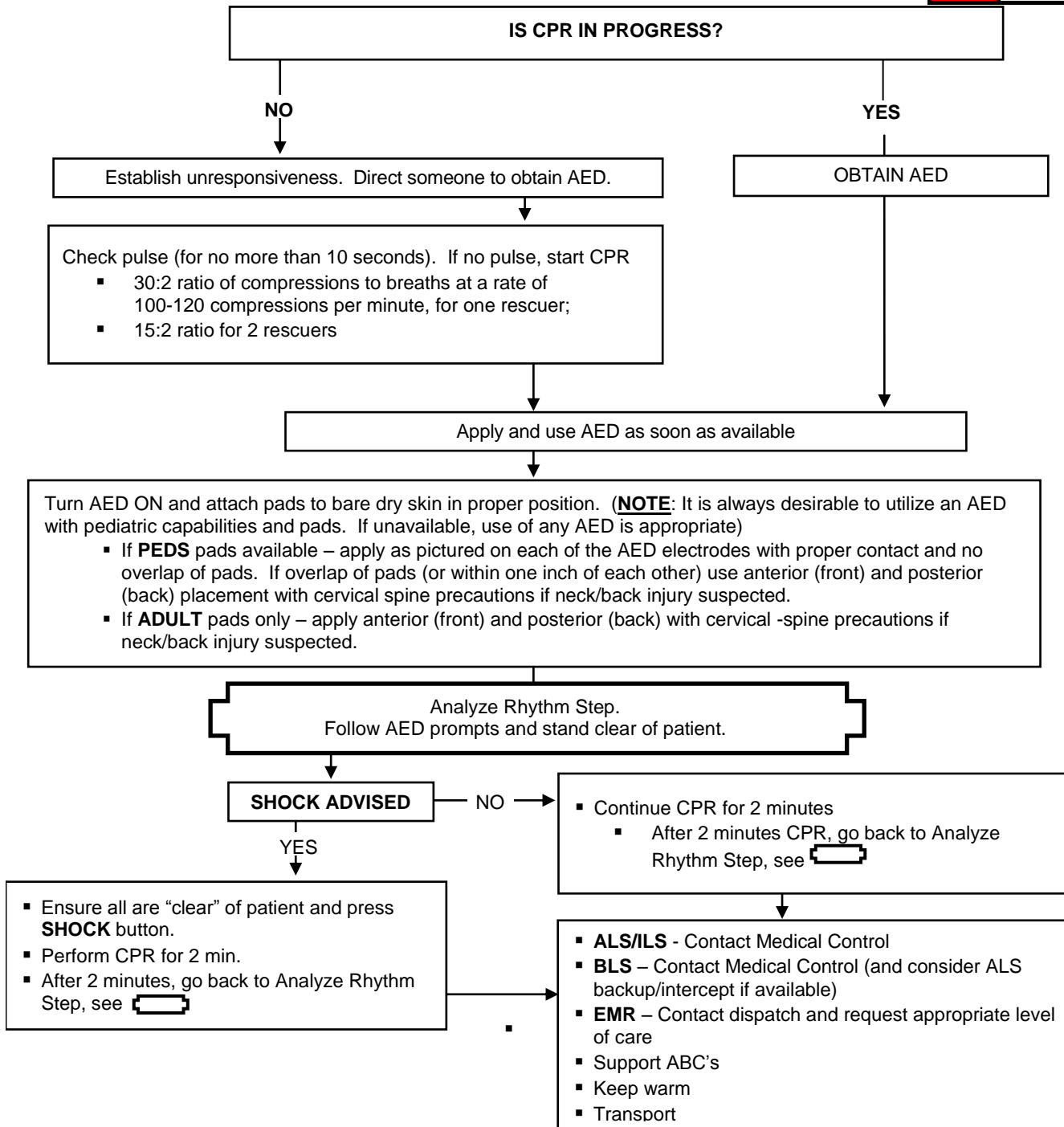




**AED-Pedatric**

| Legend |                 |
|--------|-----------------|
|        | EMR             |
|        | EMT             |
|        | Intermediate    |
|        | Paramedic       |
|        | Medical Control |



**Special Considerations:**

- If injury or neck/back trauma suspected, maintain spinal motion restriction.
- Remove patient from hazardous environment or standing water prior to use of AED.
- If AED in place, EMS personnel should let AED complete rhythm analysis prior to switching to manual defibrillator.