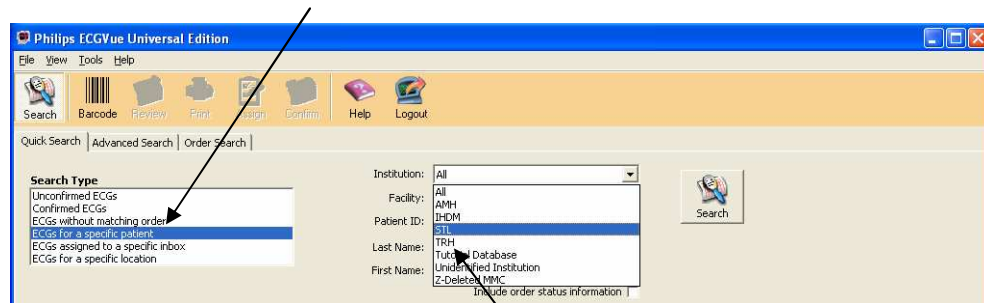
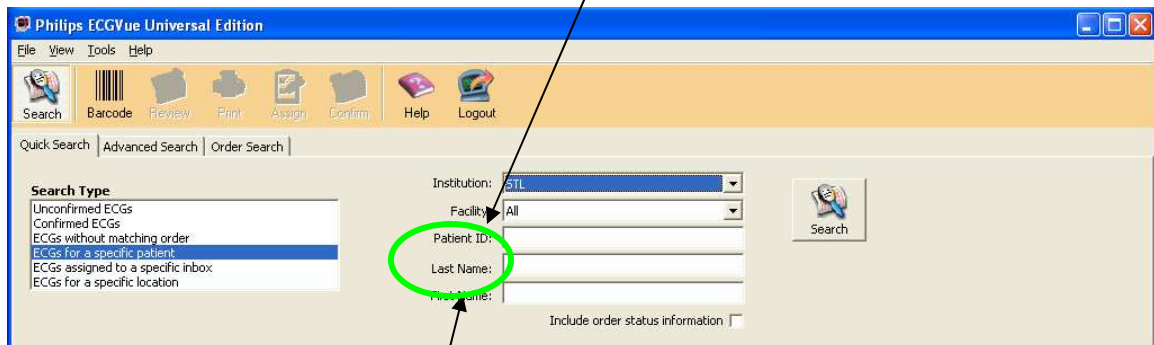


TraceMaster ECGVue instructions

- 1) Access via Citrix or from shortcut on desktop.
- 2) Username and password is the same as your Citrix/IHS email/ Network login.
- 3) Once logged into the system you should choose "Search type" field to:
ECGs for a specific patient



- 4) Make sure you change "Institution" to STL (see above).
- 5) To search by patient it is best to use "Patient ID" which represents the St. Luke's Medical Records number.



- 6) You can also search by "Last name". If you do this you should end the last name with a % (ie: smith%).
- 7) Once you find the patient of interest, you can select them (by double clicking) and view a history of their ECGs completed just like the old ECG system. There will be tabs across the top of the ECG showing all of the previous ECGs.
- 8) To print you will notice the print icon in the top tool bar shown below.



Any questions or difficulties with the application you can call Diagnostic Cardiology at 369-7318.